

-IFT *Cmcm*

$$2[6^3]+2[3.5^3]+[3^2.4^3]+2[5^2.6^2]+2[4^6]+4[4.5^4.6]+2[4^2.5^2.6.14^2]+[4^7.5^{14}.6^2.14^6]$$

12 23 19 8

TILES

Face symbol:

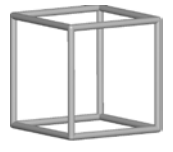
$[6^3]$

$[3.5^3]$

$[3^2.4^3]$

$[5^2.6^2]$

$[4^6]$



V, E, F:

(8, 9, 3)

(7, 9, 4)

(6, 9, 5)

(9, 11, 4)

(8, 12, 6)

Symmetry:

m..

m..

m2m

m..

$\bar{1}$

Wyckoff:

8f

8f

4c


8f

8d


Label:

t-kah 

t-znb 

t-irr-1 

t-pes 

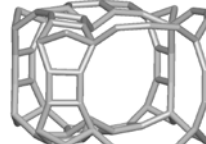
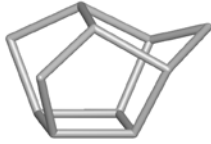
t-cub 

Face symbol:

$[4.5^4.6]$

$[4^2.5^2.6.14^2]$

$[4^7.5^{14}.6^2.14^6]$



V, E, F:

(11, 15, 6)

(21, 26, 7)

(70, 97, 29)

Symmetry:

1

m..

m2m


Wyckoff:


16h


8f

4c

Label:

t-ift-1 

t-ift-2 

t-ift-3 

Special features: *simple, modified natural tiling*

TILING

